

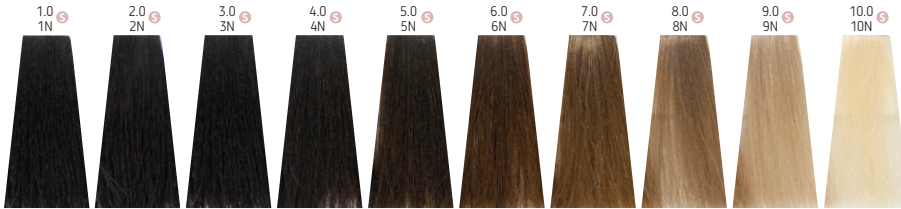
# NAK HAIR PERMANENT

*colour with integrity*

DIGITAL COLOUR CHART

## NATURAL COLLECTION

### NATURAL / .0 N



### NATURAL INTENSIVES / .00 NI

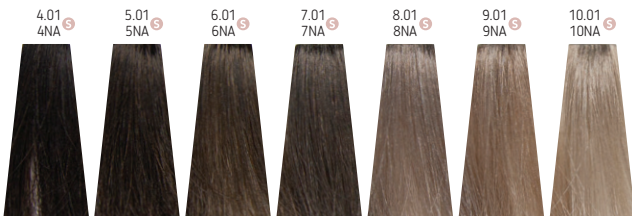


### GREY COVERAGE

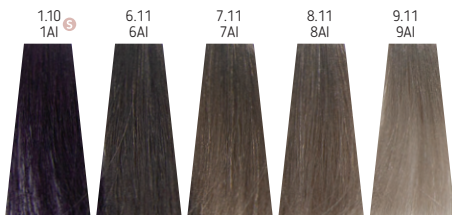


## ASH COLLECTION

### NATURAL ASH / .01 NA



### ASH INTENSIVES / .11 AI



## CENDRE COLLECTION

### VIOLET ASH / .21 VA



### PEARL / .32 GV



## BRUNETTE COLLECTION

### NATURAL GOLD / .03 NG



### BRUNETTE / .7 B



### BRUNETTE GOLD / .73 BG



### VIOLET GOLD / .23 VG



### CHESTNUT / .8 CH



### WARM MAHOGANY / .35 GM

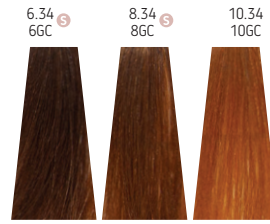


## GOLD COLLECTION

**GOLD / .3 G**



**GOLD COPPER / .34 GC**

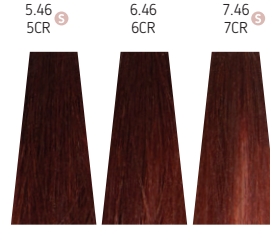


## COPPER COLLECTION

**COPPER / .4 C**



**COPPER RED / .46 CR**



## RED COLLECTION

**RED / .6 R**



**RED VIOLET / .62 RV**



## VIOLET COLLECTION

**VIOLET / .2 V**



## MAHOGANY COLLECTION

**MAHOGANY / .5 M**



## COLOR BRIGHTS

**INTENSIFIERS**

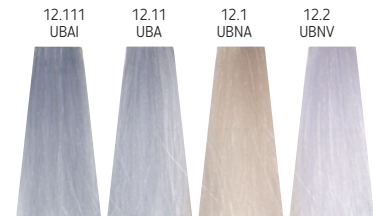


## BOOSTER



## ULTIMATE BLONDES

**HIGHLIGHT**



## SHEER FINISH

**TONER**



## COLOR SHADOW

**TONER**



## CLEAR

**SOFT ONLY**



SOFT COLOUR ONLY

SOFT ONLY

AVAILABLE IN SOFT COLOUR

S

NAK PERMANENT	MIX	ACTIVATORS	RESULT	TIMING
Colour	1+2	10VOL	1 level lift	35-45min
		20VOL	2 levels lift	35-45min
		30VOL	3 levels lift	35-45min
		40VOL	4 levels lift	35-45min
Grey Coverage	1+1	20VOL	Intensive coverage	45-60min
Colour Balance	1+2	Demi or tone Activator	Deposit only	5-25min
Toning	1+2	Demi or tone Activator	Deposit only	5-25min
Ultimate Blondes	1+2	40VOL	Super lightening	45-60min

NAK SOFT Ammonia-Free	MIX	ACTIVATORS	RESULT	TIMING
Colour	1+1.5	Soft Activator	Level-on-level/going darker	25min
		10VOL	1/2 - 1 level lift	35-45min
		20VOL	1 - 1 1/2 level lift	35-45min
Grey Coverage	1+1.5	Soft Activator	Blended coverage	25-35min
Colour Balance	1+1.5	Soft Activator	Deposit only	5-25min
Toning	1+1.5	Soft or Demi Activator	Deposit only	35-25min

## NAK HAIR PERMANENT

*colour with integrity*

NAKHAIR.COM.AU . @NAKHAIR  
14 SMALLWOOD PLACE  
MURARRIE Q 4172 AUSTRALIA  
+61 7 3899 9133